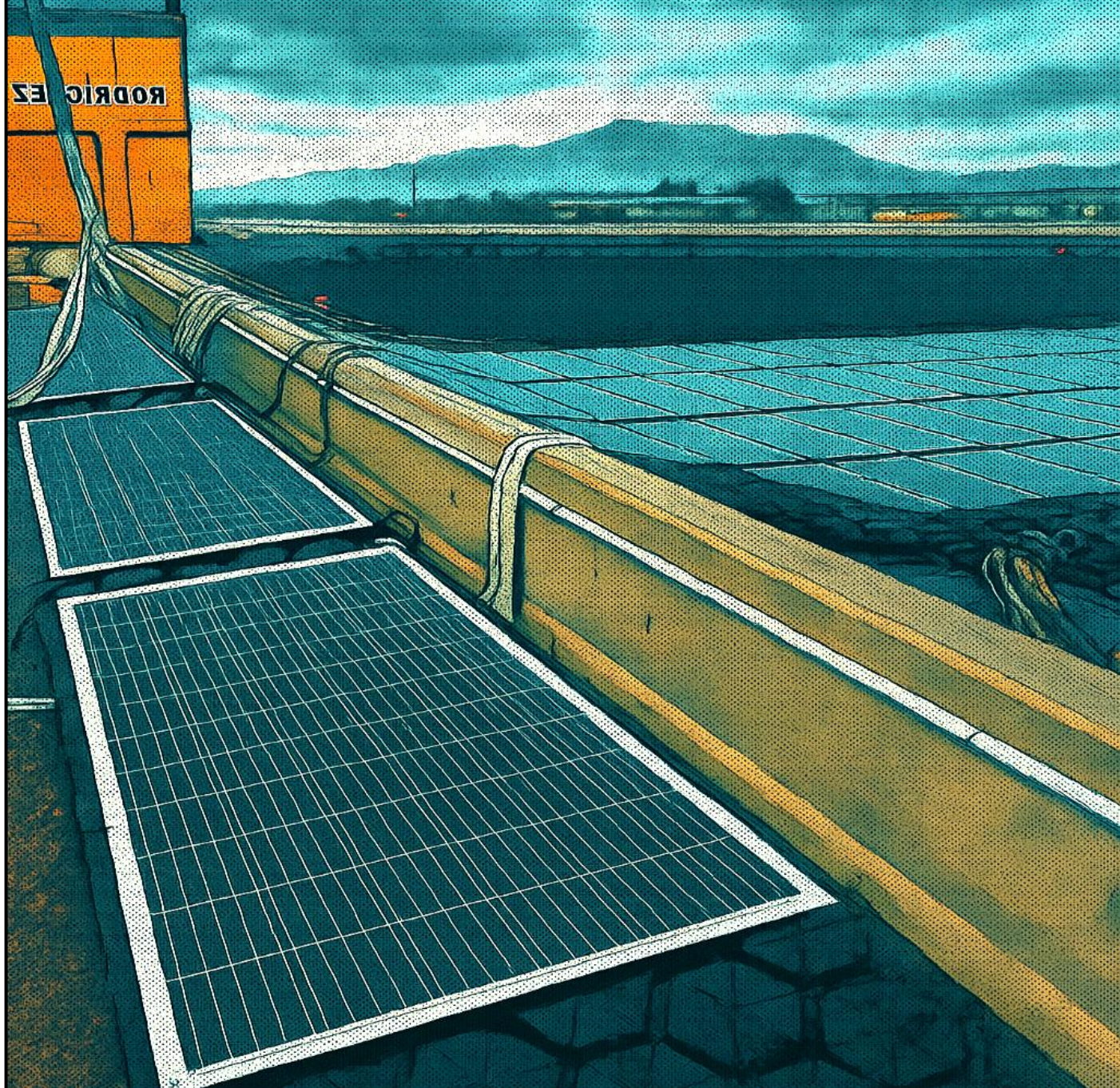


H2OLOCK FLOATING SOLUTION ASSEMBLY COMICS



H₂OLOCK



Co-funded by
the European Union

Funded by the European Union. Views and opinions expressed are however those of the author(s) only and do not necessarily reflect those of the European Union or CINEA. Neither the European Union nor the granting authority can be held responsible for them.

MODULAR H2OLOCK SOLUTION
COVER ASSEMBLY COMIC

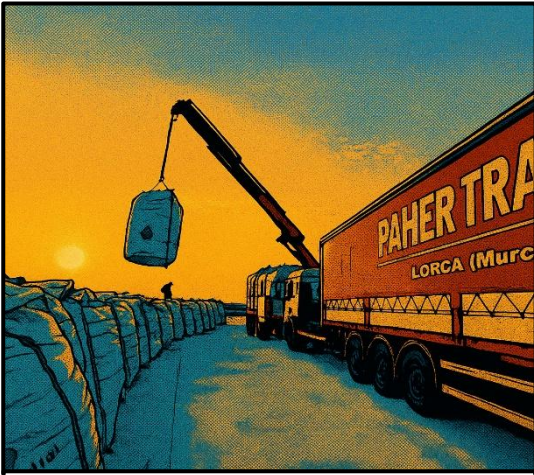


H₂OLOCK



Co-funded by
the European Union

Funded by the European Union. Views and opinions expressed are however those of the author(s) only and do not necessarily reflect those of the European Union or CINEA. Neither the European Union nor the granting authority can be held responsible for them.



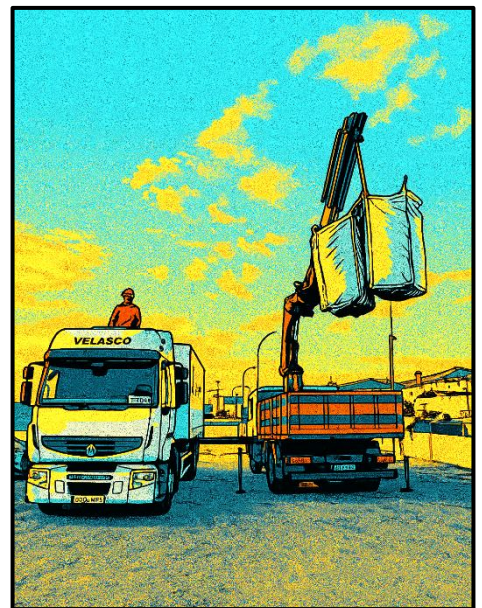
EVERYTHING STARTS WITH THE CHARGING OF THE TRUCKS



THAT CAN BE IN BIG OR SMALL TRUCKS, AND IN GREAT BIG-BAGS!



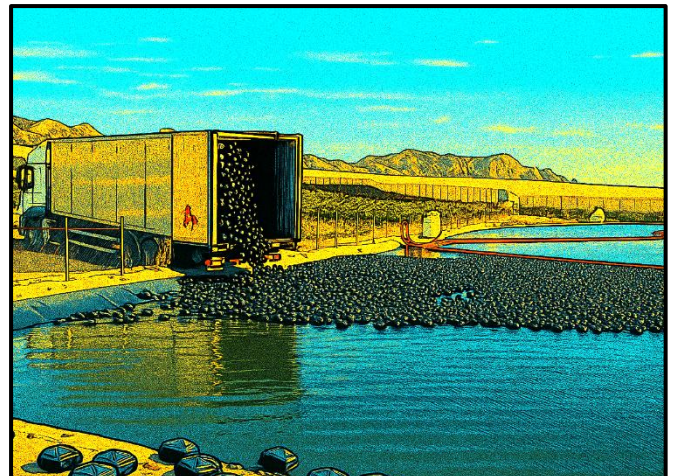
OR LARGE DIRECTLY ON MOBILE FLOOR TRUCKS



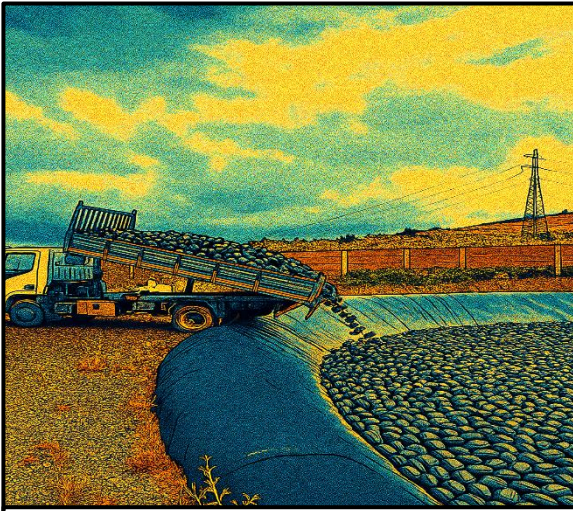
TO THEN DOWNLOAD THE BIG-BAGS DIRECTLY ON THE BASE...



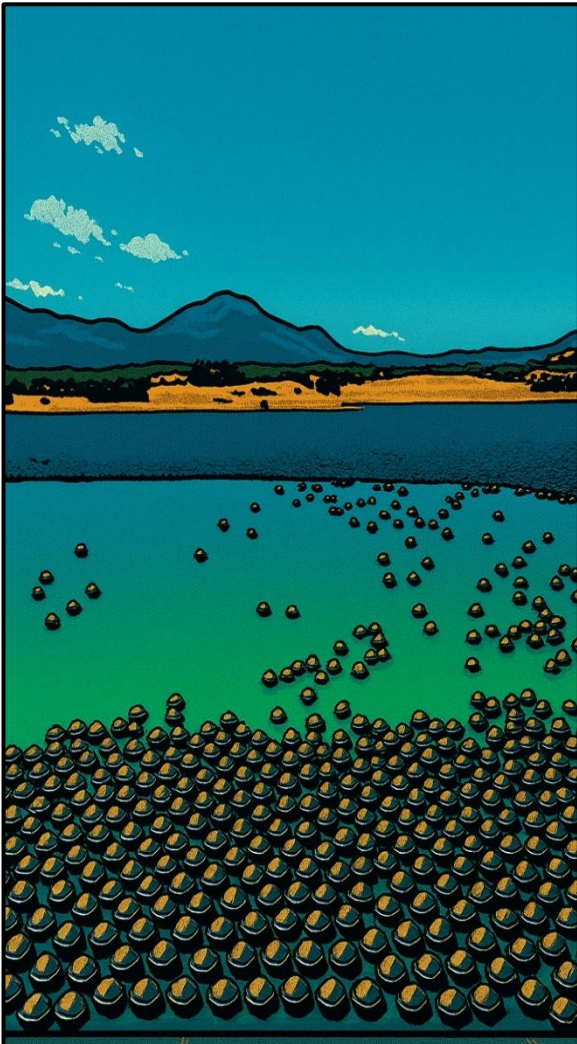
NOW YOU JUST HAVE TO DOWN THEM, TAKING THE FUND OF THE BIG-BAG



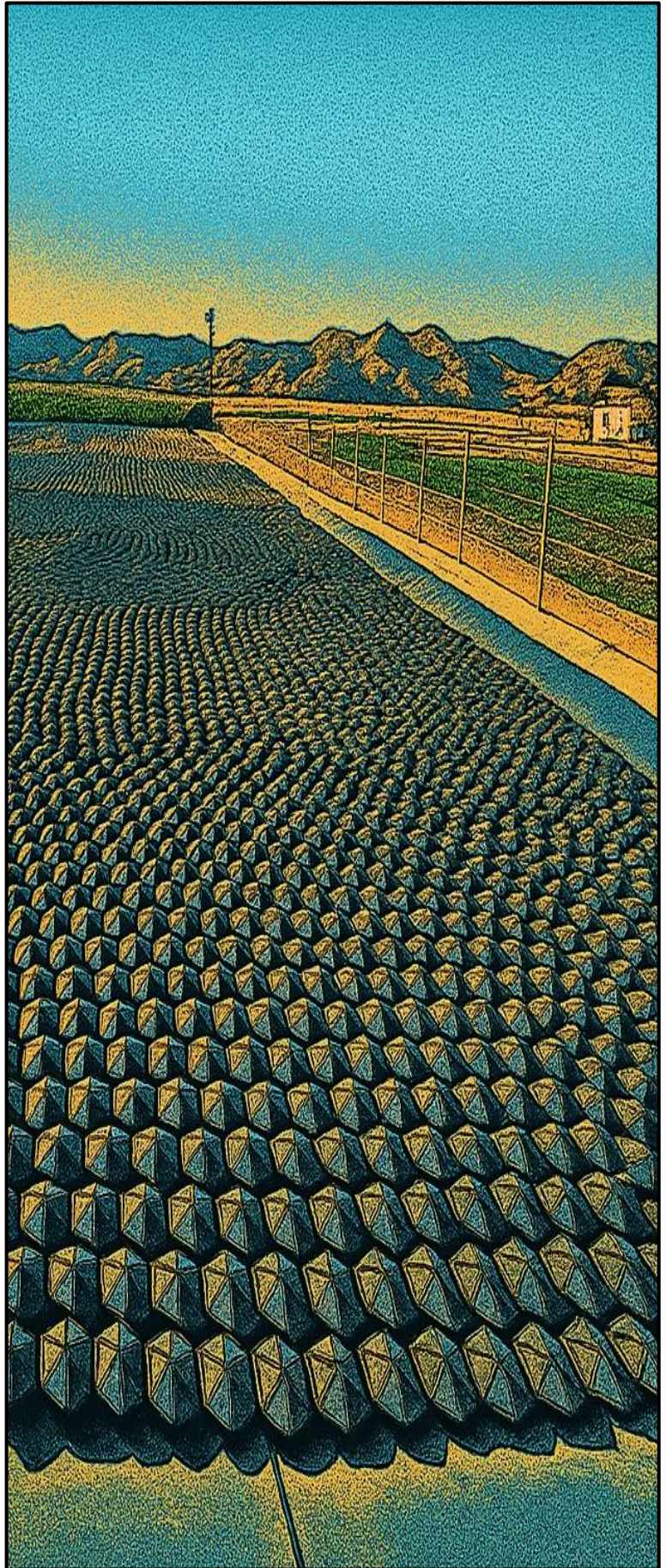
IF THEY DON'T COME IN BIG-BAGS BUT IN BULK, THEN YOU JUST HAVE TO PUSH A BOTTON... AND READY...



IF THERE IS NOT A LOT OF SPACE YOU CAN ALSO USE SMALL VOLQUET TRUCKS



WIND AND WATER MOVEMENT MAKE MODULES ORGANIZE AUTONOMOUSLY. IT IS CONVENIENT TO KEEP A COUPLE OF BIG-BAGS FOR THE FINAL ADJUSTMENT.



THE CASE IS THAT, ONE WAY OR ANOTHER, THEY ORGANIZE THE RESERVOIR COMPLETELY!
THEY REDUCE 80% OF THE EVAPORATION AND COMPLETELY ELIMINATE THE ALGAE

ASSEMBLY COMIC FOR THE H2OLOCK
FLOATING SOLAR POWER FACILITY



H₂OLOCK

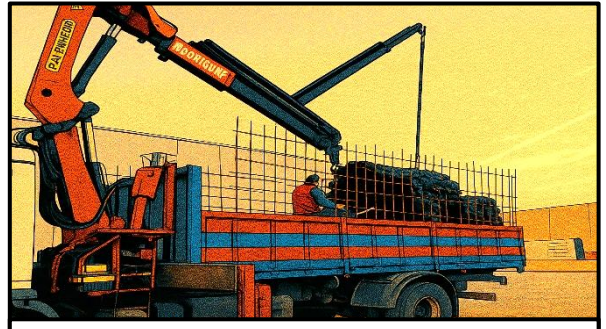


Co-funded by
the European Union

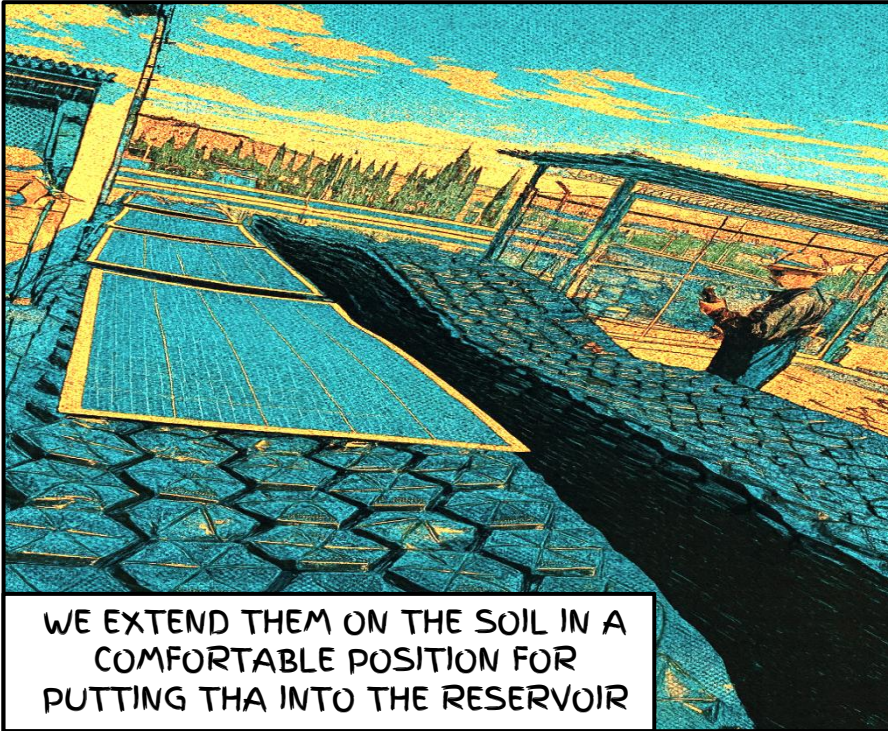
Funded by the European Union. Views and opinions expressed are however those of the author(s) only and do not necessarily reflect those of the European Union or CINEA. Neither the European Union nor the granting authority can be held responsible for them.



WE ROLL FLOATING BLANKETS



WE LOAD THEM IN THE ROAD

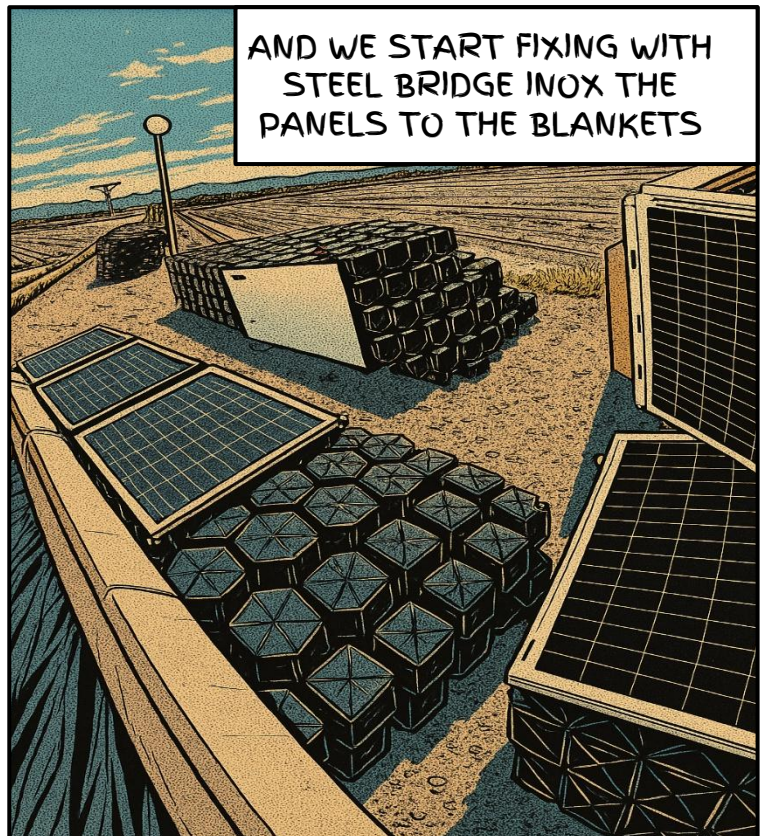


WE EXTEND THEM ON THE SOIL IN A COMFORTABLE POSITION FOR PUTTING THA INTO THE RESERVOIR

BLANKETS ALREADY COME EQUIPPED WITH THEIR STRENGTHS AND CLIPS



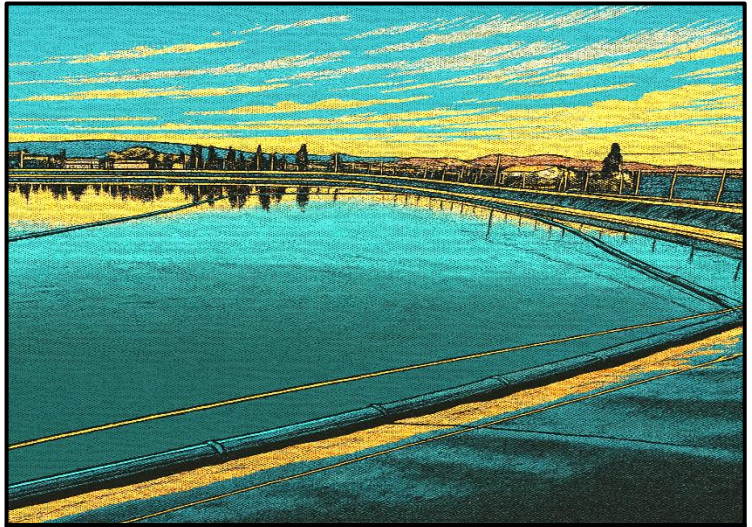
TOGETHER WITH THEM WE HAVE ALREADY COUPLED THE FLEXIBLE SOLAR PANELS



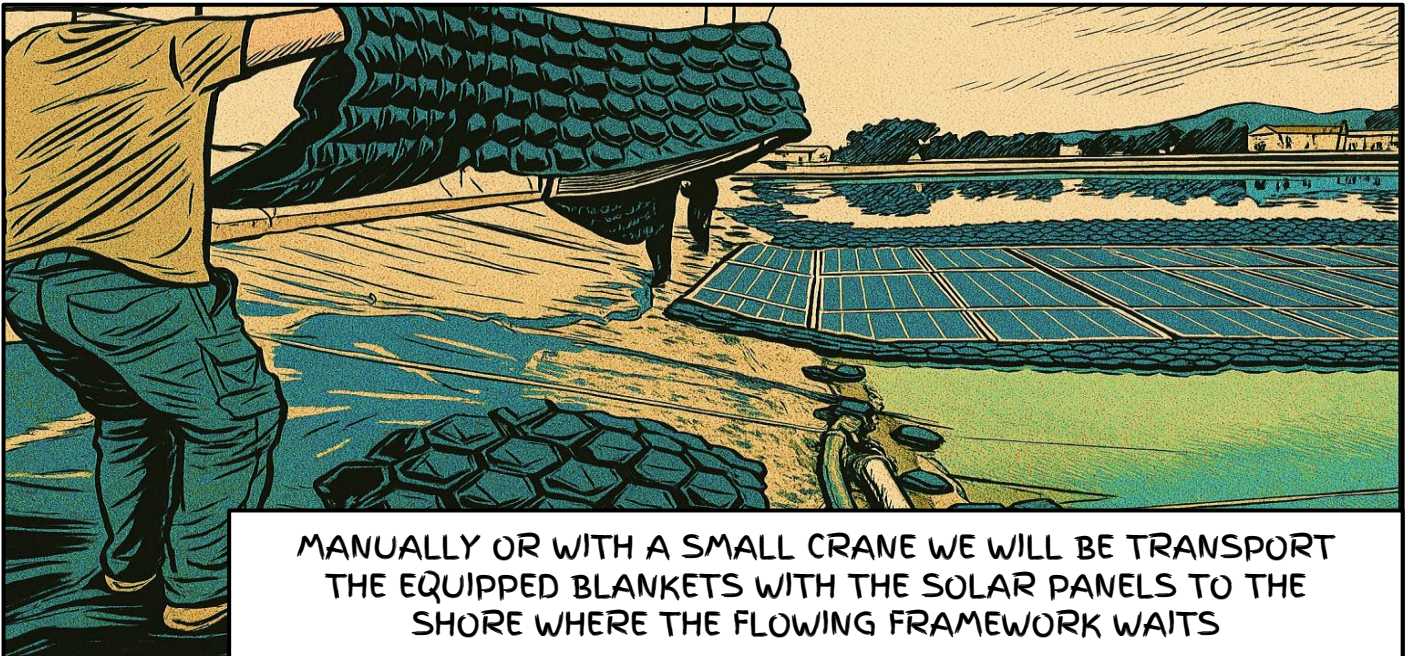
AND WE START FIXING WITH STEEL BRIDGE INOX THE PANELS TO THE BLANKETS



WHILE SO, OTHER WORKER STARTS ASSEMBLING THE FLOATING TUBE FRAMEWORK

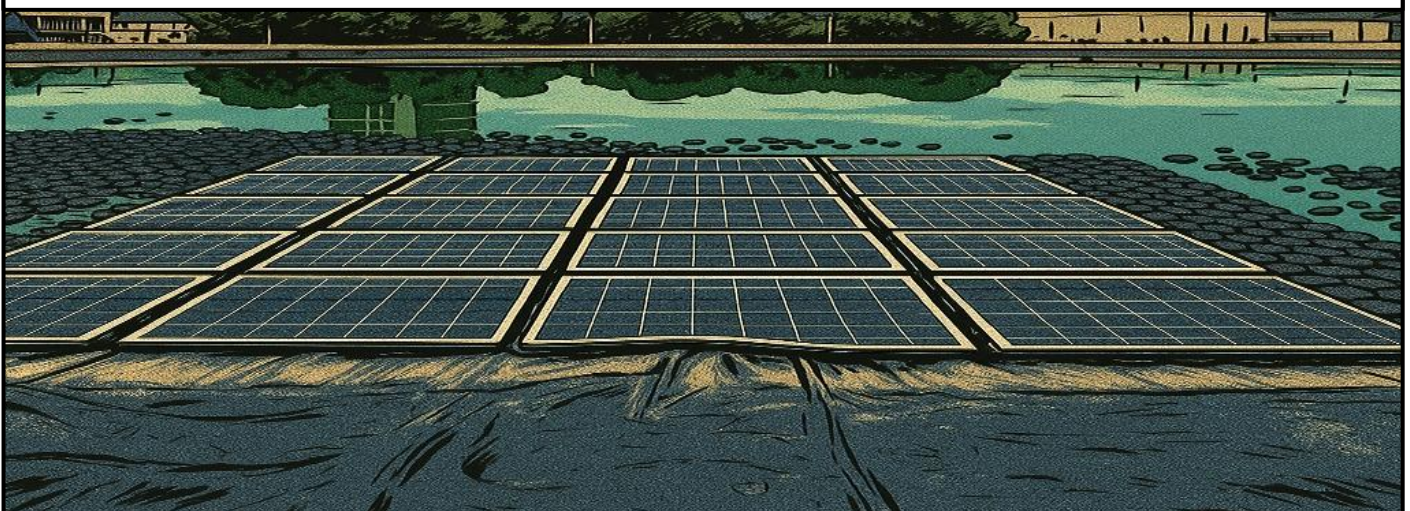


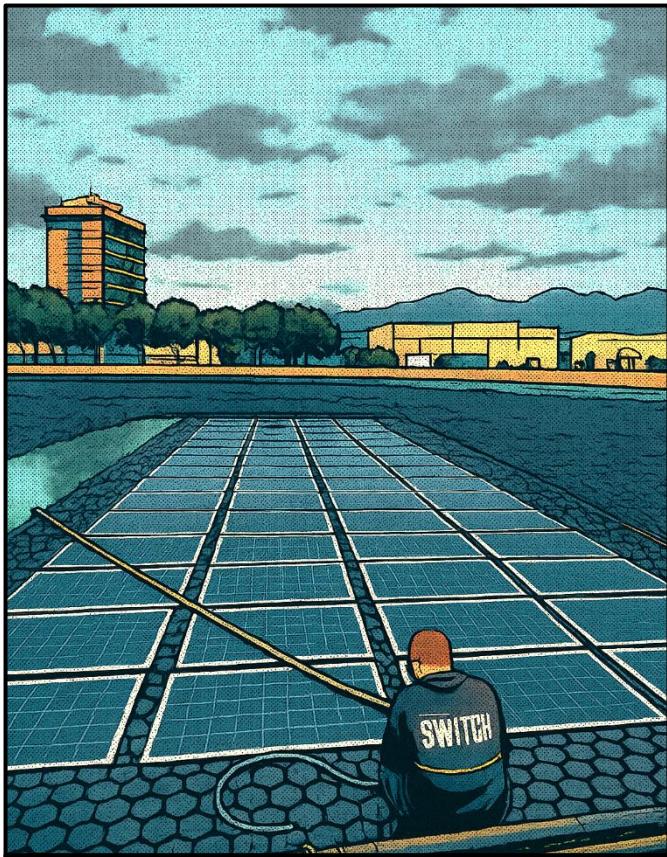
PE TUBES IN 110 MM ARE SOLDING FORMING A DOUBLE PERIMETRAL FRAMEWORK THAT WILL ACCOMPANY THE BLANKETS



MANUALLY OR WITH A SMALL CRANE WE WILL BE TRANSPORT THE EQUIPPED BLANKETS WITH THE SOLAR PANELS TO THE SHORE WHERE THE FLOWING FRAMEWORK WAITS

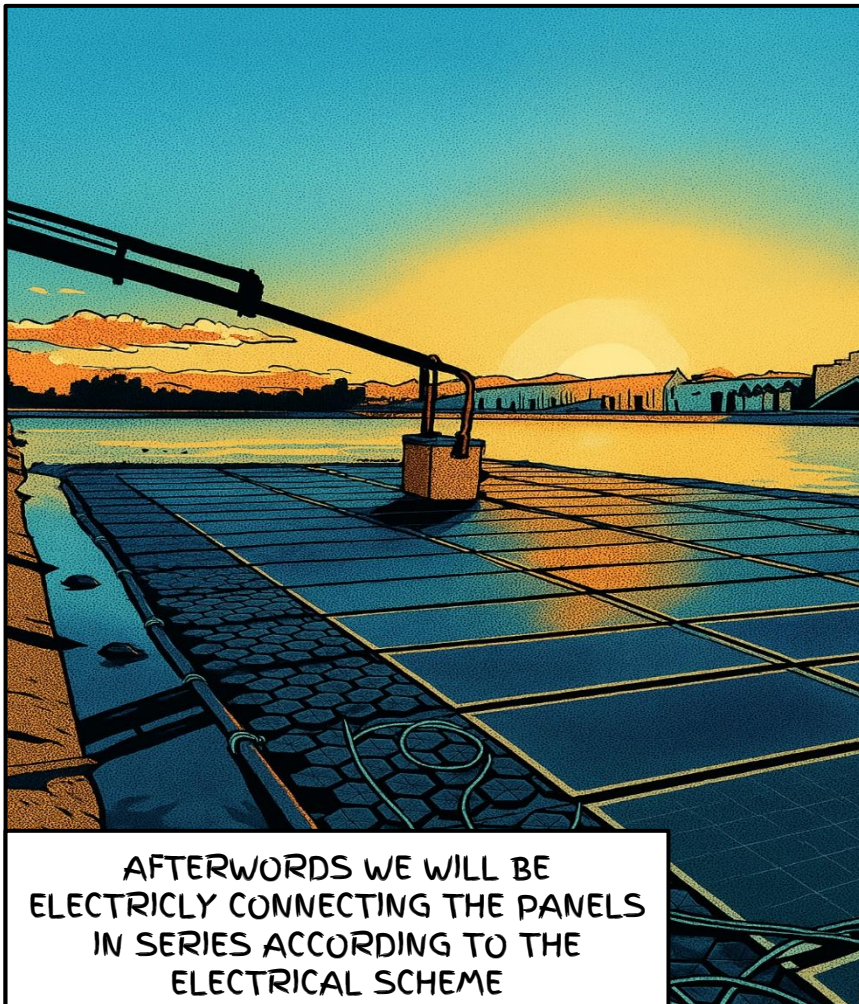
WE WILL CONNECT MECHANICALLY EACH BLANKET WITH THE OPPOSITE THROUGH THE CONNECTORS THAT COME PRE-MOUNTED AND PUSHING THE INSTALLATION TOWARDS THE WATER, SO THAT IT WILL GROW FROM THE SHORE



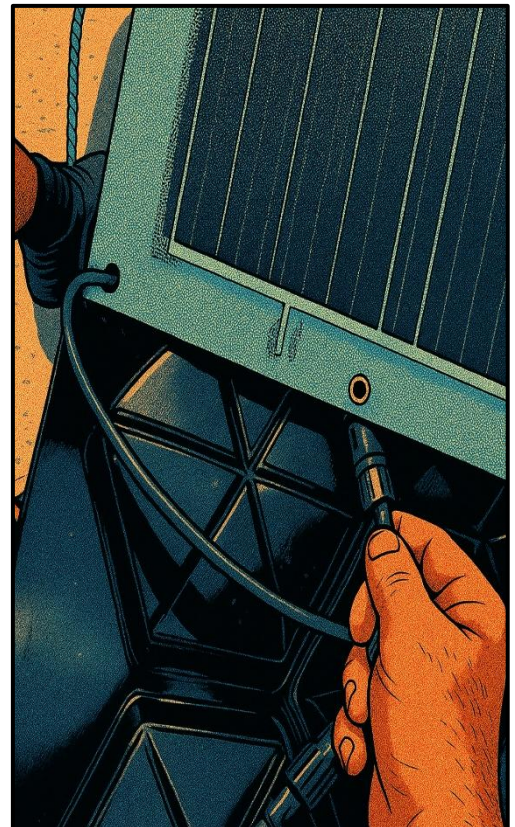


WE WILL INSTALL PERIMETRAL BLANKETS WITHOUT SOLAR PANEL TO AVOID THE POOLING OF BIRDS

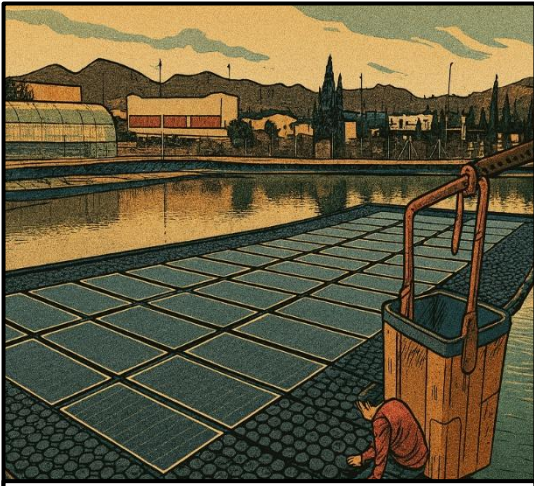
ONCE THE PLACEMENT OF THE BLANKETS HAS BEEN COMPLETED, WE WILL TURN THE COVER TO IMPROVE THE REACH OF THE CRAN TRUCK AND START THE ELECTRICAL CONNECTION.



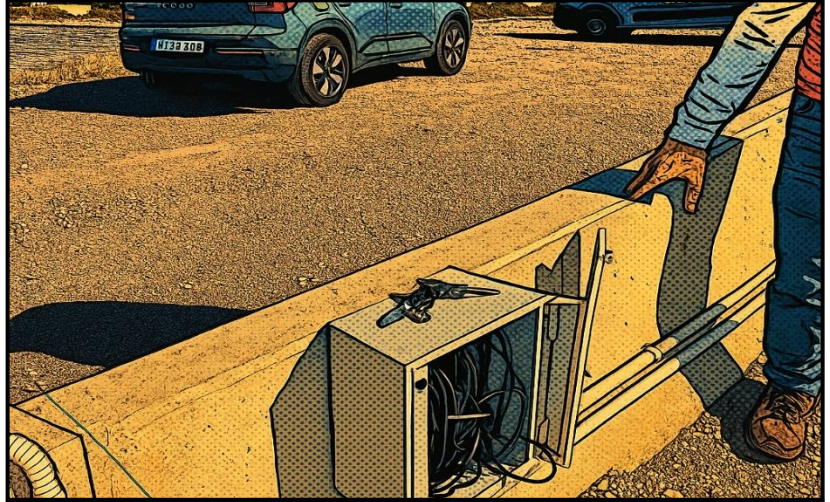
AFTERWARDS WE WILL BE ELECTRICLY CONNECTING THE PANELS IN SERIES ACCORDING TO THE ELECTRICAL SCHEME



TAKING CARE THAT THE CONNECTION IS PROTECTED FROM THE SUN AND WATER BETWEEN PANEL AND BLANKET

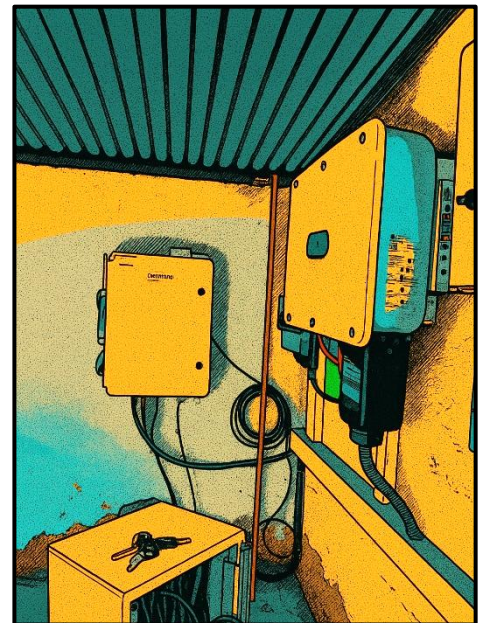


ENSURE THE BLANKETS TO THE PERIMETER AND THATS ALL!

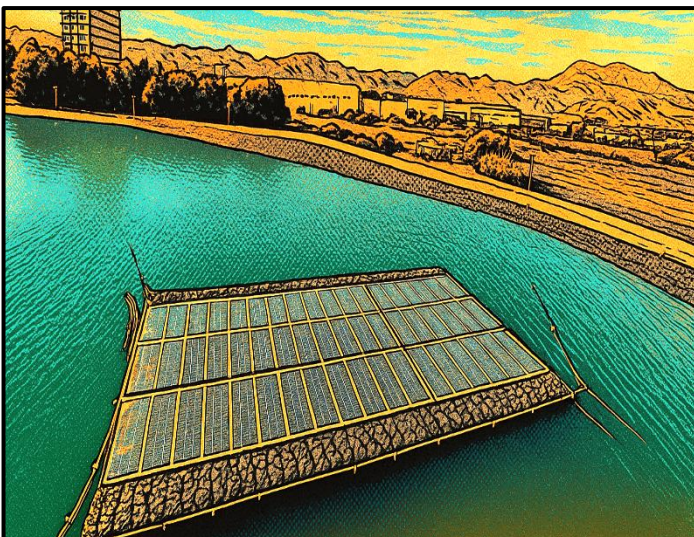


IT'S TIME TO ELECTRIC INSTALLATION

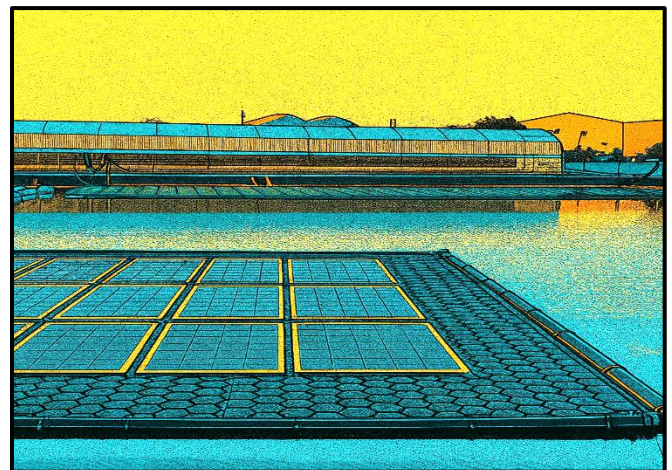
THIS PART MUST BE CARRIED OUT BY A PROFESSIONAL ELECTRICIST AS ANY INSTALLATION



TABLE, INVESTOR, PROTECTIONS...



FINALLY, YOU JUST HAVE TO ARRANGE AND SECURE THE NAUTIC ROPES



AND OUR FLOATING SOLAR PLANT IS FINISHED. SO EASY!